



Atlanta
Contemporary
Art Center

July 9 – September 19, 2010



www.thecontemporary.org

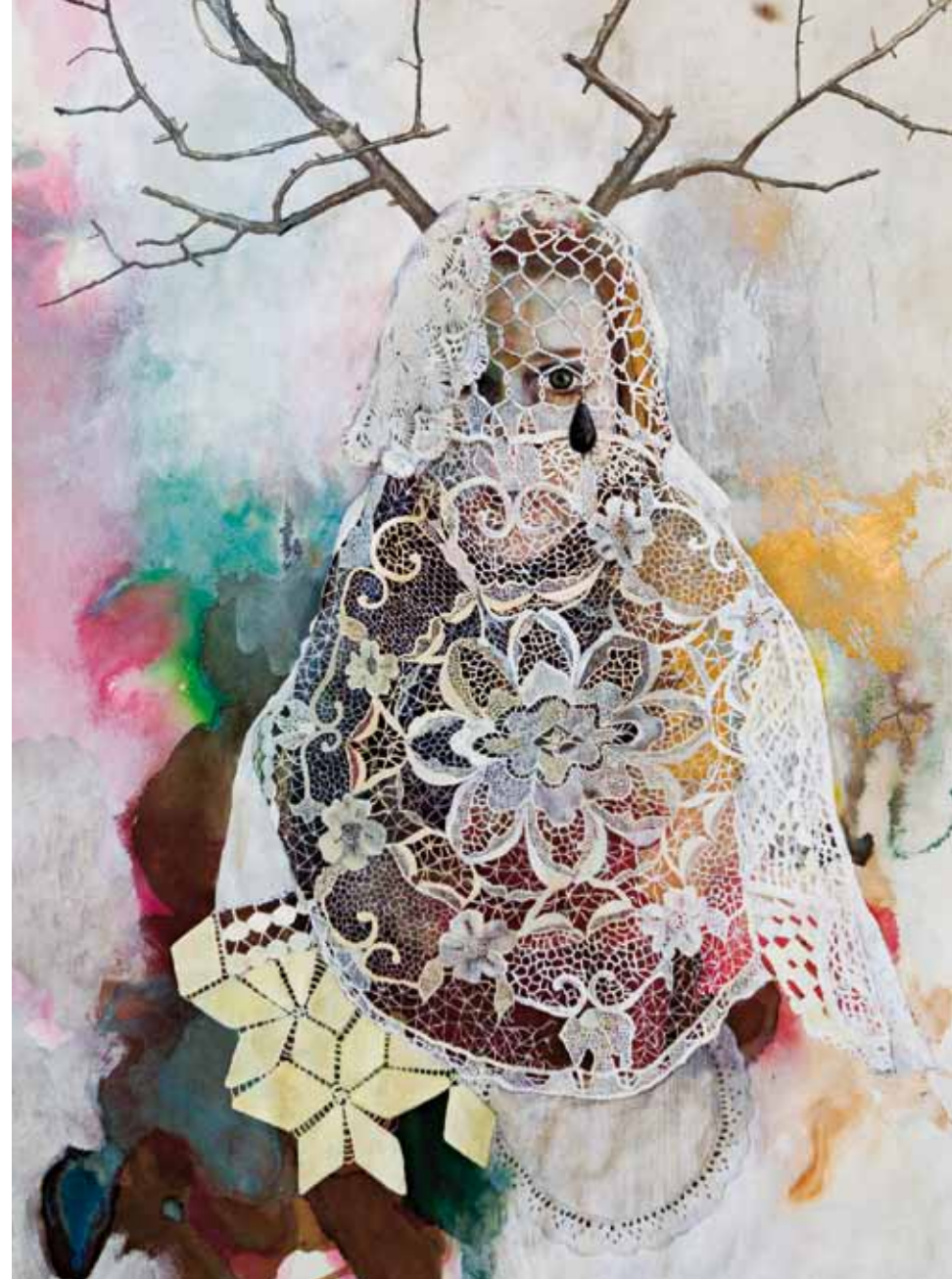
Shana Robbins is an Atlanta-based artist whose works address conditions of feminine power, natural phenomena, and cycles of life and death. Using a variety of media, she presents herself as a solitary and galvanizing figure, elaborately costumed and performing ritualized gestures in unique landscapes. Drawing on her own experiences as model and student of Butoh movement, and on numerous mythologies that link womanhood with the Earth and roles of conduit and healer, Robbins creates composite narratives of identity and transformation.

Commissioned by the Atlanta Contemporary Art Center, *Supernatural Conductor* is the largest project by Robbins to date. In planning her installation, she called upon key words and phrases including “altars, horror films, dream catchers, ghost in the machine, dirt and crystals, lasers, rainbows or spectrums, mirrors, parlor tricks or magic aesthetics, the failure of flesh, dancing, rolling, spinning, and the desecrated realm of beauty.” Viewers will encounter many

Exhibition

of these materials and references, which contribute to the overall psychic and spiritual territory that the artist has explored throughout her career.

A large structure/shelter in the gallery corner is guarded by two mannequins, dressed in the costumes for characters known as “Tree Ghost” and “This is Me Be Careful.” These garments are worn by Robbins in performances—some for the public, others done for the camera—in Iceland, Mexico, New Mexico, and rural Georgia. Accumulated hand-crocheted doilies that reference the Victorian period were sewn together to create an ornamental pathway through the space, ending at the window which frames an opening night performance. Videos and realistic paintings and drawings are presented throughout the exhibition, indicating the range of approaches to representation and movement that Robbins uses to construct works that are simultaneously beautiful, vulnerable, lurid, and timeless.



Robbins has exhibited her work or performed at Las Vegas Contemporary Arts Center; MonkeyTown, Brooklyn; Mobius, Boston; BECA gallery in New Orleans; and at Atlanta galleries including Whitespace, and TEW Galleries. She was included in *Talent Show: the 2007 Atlanta Biennial* at Atlanta Contemporary Art Center.

Cover: Shana Robbins, *Tree Ghost in Iceland*, 2009, Performance photograph, Courtesy the artist
Above: Shana Robbins, *Tree Ghost II*, 2008, Colored pencil, gouache, ballpoint pen, spray paint, ink, graphite, coffee, and wine on paper, 40 x 26 inches, Courtesy the artist





Exhibition

Amy Myers

Feminine Space

Drawing is the primary medium for New York- and Kansas City-based artist Amy Myers. Her large-scale and labor-intensive works range in size from 7 to 12 feet high, and envelope the viewer in expressive and analytic gestures made in graphite, gouache, and conté crayon on paper. Individual drawings often take months to create, and possess symmetrical forms that combine elements from the worlds of physics, horticulture, science fiction, anatomy, and architecture.

Myers is the daughter of a physicist, and her drawings capture the spirit of someone trying to understand the workings of the universe, from the molecular to the cosmological. She records the geometries of hybrid structures, rendering what can seem like bone, electrical impulses, insect wings, labia, and information pathways. Using a primarily dry palette, she makes sweeping gestures with her arm and intimate markings with her hand, on large horizontal and off-square papers that retain each line, erasure, and residue of process. Myers's works surround the viewer, offering a dense and diagrammatic field in which to locate one's own body while observing her invented systems of fantastic phenomena.

Myers has exhibited her work at New York galleries and museums including Mike Weiss Gallery, Feigen Contemporary, and Mary Boone Gallery; Suzanne Vielmetter Los Angeles Projects; Dunn and Brown Contemporary in Dallas; and Santa Barbara Contemporary Arts Forum. In 2005, she received The Pollock-Krasner Foundation Award.



Amy Myers, *Red Giant Between Earth And Sun*, 2008, Graphite, conté, gouache and pastel on paper, 132 x 120 inches, Courtesy the artist

For more information about Exhibitions, visit www.thecontemporary.org/exhibitions.



Programming

Exhibition Openings

Shana Robbins: *Supernatural Conductor*

Amy Myers: *Feminine Space*

Friday, July 9

Patron Member Preview, 7-8 pm, by invitation

Patron Member Tour, 7:30 pm, by invitation

Public Opening, 8-10 pm

Opening Night performance by Shana Robbins, 8:30 pm

Artist Talk: Amy Myers

Sat, July 10, 11 am-12 pm

Exhibiting artist Amy Myers discusses the evolution of her large-scale drawings.

Curator Talk: Stuart Horodner

Thurs, July 15, 6:30-7:30 pm FREE

Artistic Director Stuart Horodner leads a tour of the current exhibitions.

Artist Talk: Shana Robbins

Sat, July 17, 11 am-12 pm

Exhibiting artist Shana Robbins discusses her influences and experiences with performance, painting, and Butoh movement.

Westside Arts District 3rd Saturday Art Walk

For more info, visit www.wadatlanta.org



Marina Abramović performing Joseph Beuys's *How To Explain Pictures to a Dead Hare*, 2005

Film Screening & Commentary: on Marina Abramović

Thurs, July 22, 6:30-7:30 pm FREE

View excerpts from Babette Mangolte's documentary of Abramović's performance, *7 Easy Pieces*, at the Solomon R. Guggenheim Museum in 2005. The legendary artist reenacts influential performances of the 1960s and 70s by Bruce Nauman, Vito Acconci, Valie Export, Gina Paine, Joseph Beuys, and her own works. Commentary by Stuart Horodner.

Creative Lives & Careers: Operating Systems

Thurs, Aug 12, 6:30-7:30 pm FREE

This lecture by Stuart Horodner launches the new *Creative Lives & Careers* series, providing an overview of programs and publications to come, and discussing ideological and practical issues facing artists and enthusiasts.



William Pope.L,
Photo: Lydia Grey,
Courtesy the artist

Screening & Commentary: on William Pope.L

Thurs, Aug 19, 6:30-7:30 pm FREE

View documentation of endurance performances by William Pope.L, the controversial multi-disciplinary artist whose works examine race, masculinity, and power. Commentary by Stuart Horodner.

Curator Talk: Stuart Horodner

Sat, Aug 21, 11 am-12 pm

Stuart Horodner leads a tour of the current exhibitions.

Westside Arts District 3rd Saturday Art Walk

For more info, visit www.wadatlanta.org

Panel Discussion: Constantly Drawing

Thurs, Sept 9, 6:30-7:30 pm FREE

Atlanta artists Alex Kvares and Whitney Stansell discuss drawing as a primary medium, focusing on imagery, process, and scale.



Whitney Stansell,
Apollo Moon Landing (detail),
2008, Courtesy
the artist

Creative Lives & Careers: How Do You See Yourself?

Sat, Sept 18, 11 am-12 pm

This workshop provides artists with the tools to represent themselves and their creative process. We'll analyze successful postcards, ads, and marketing campaigns as models for your own use.

Westside Arts District 3rd Saturday Art Walk

For more info, visit www.wadatlanta.org

Free Thursdays are sponsored by Perennial Properties

Shana Robbins's performance sponsored by the Women's Caucus for Art of Georgia

For more information about Programming, visit
www.thecontemporary.org/programming



Creative Lives & Careers

Creative Lives & Careers provides working artists, educators, and enthusiasts with practical guidance about their work and careers. Knowledgeable arts professionals share their “tried and true” experiences in order to educate and inspire participants. This program is an evolution of our Artist Survival Skills series, and is an effort to move beyond merely surviving in the art world into the realm of succeeding.



Contact Jennifer Long
Membership and Education Coordinator

404.688.1970 x213
jlong@thecontemporary.org

Member trip: Houston

Look for the following *Creative Lives & Careers* sessions:

Operating Systems, see page 5

How Do You See Yourself?, see page 6

Future sessions:

Role Models & Mentors

Artists and curators examine how artists can utilize the efforts and achievements of role models to shape their own creative work.

Art Ecologies

Curators and arts administrators from around the U.S. look at what makes a dynamic creative community and how artists can utilize existing networks and venues, or cultivate their own.

Residencies & Retreats

Representatives from local and national residency programs discuss various retreats and how to use them to further one's goals.

On Reading & Writing

Critics and poets address how and why writing and reading skills are essential for the practicing artist.

Stay tuned! We are producing a book of opinions, advice, and creative questions from the artists, curators, dealers, and critics who have participated in our programs focused on artistic practices. Available in winter 2010.

Your Atlanta Contemporary Art Center membership benefits you now more than ever.

New Reciprocal Admission

All members of the Atlanta Contemporary Art Center get free admission to exhibitions and non-ticketed programs at Hammonds House Museum (www.hammondshouse.org). Enjoy one entry per membership card (other membership benefits do not apply).

New Patron Preview Tour

Starting with the opening on July 9, members at the \$100 level and higher can participate in an exclusive curator-led tour during the Patron Preview hour. Patron members will be the first to get the scoop on the artists and work in our exhibitions.

Membership at ACAC is your free pass to a year's worth of exhibitions and programming. Members also receive special invitations, discounts, tours, and much more. Not a member? Join today!

View all of the benefits of membership and join online at www.thecontemporary.org/support.



We are grateful to the Emily Hall Tremain Foundation for its generous support of this program and publication.



Event Rental

Just what is it that makes special events at the Atlanta Contemporary Art Center so unique? Could it be the uncommon architecture that inspires exceptional celebrations? Or is it the consequential, riveting, and always unexpected exhibitions? Maybe it's our personalized approach? Whatever the reason, ACAC can help make your event memorable.

Whether your vision is a down-home barbeque in our brick-lined courtyard, a sparkling wedding reception under the steel girders and twinkling lights of our pavilion, or cocktails and conversation in our former 1920s warehouse, if you can imagine it, we can orchestrate it. Just what is it about our events? Come see us, and you're sure to have answers all your own.

For more information, visit www.thecontemporary.org/about/facility-rental.

Contact Alana Wolf
Events Coordinator
404.688.1970 x212
awolf@thecontemporary.org

altmix Photography

Sponsors

Major funding for the Atlanta Contemporary Art Center is provided by the Fulton County Board of Commissioners under the guidance of the Fulton County Arts Council. This program is supported in part by the Georgia Council for the Arts through the appropriations from the Georgia General

Assembly. GCA is a Partner Agency of the National Endowment for the Arts. Major support is provided by the City of Atlanta Office of Cultural Affairs. Funding and support for this organization and its programs is provided in part by Anonymous, Communications 21, Forward Arts Foundation, Grants to

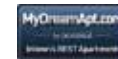
Green, LUBO Fund, Massey Charitable Trust, Metropolitan Atlanta Arts Fund, Morgan Keegan, National Endowment for the Arts, Perennial Properties, The Rich Foundation, Taylor Family Fund, Emily Hall Tremain Foundation, and The Andy Warhol Foundation for the Visual Arts.

We gratefully acknowledge the generosity of other private, corporate, and individual donors.

Contact Saskia Benjamin
Director of Institutional Advancement
404.688.1970 x 211
sbenjamin@thecontemporary.org



Tremain Foundation







The Andy Warhol Foundation for the Visual Arts



Atlanta Contemporary Art Center
535 Means Street NW
Atlanta, GA 30318
404.688.1970

Follow Us

 @becontemporary
 /AtlantaContemporaryArtCenter
 /AtlContemporary
 /AtlantaContemporary

Hours

Tues/Wed	11-5
Thursday	11-8
Fri/Sat	11-5
Sunday	12-5

Admission

Members	Free
General	\$5
Students/Seniors	\$3
Children under 12	Free
Thursdays	Free
Parking	Free



Printed on 100% Post Consumer Waste